



**E & A CONSULTING GROUP, INC.**

*Engineering Answers*

10909 Mill Valley Rd, Ste 100 | Omaha, NE 68154  
402.895.4700  
eacg.com

Dear Homeowner,

The SID has contracted concrete work to be done on the streets in your SID. A contractor will be on site to do work which includes removing the existing concrete that is damaged and replacing it with new pavement.

Throughout the course of this project, there could be some minimal damage done to yards and or sprinkler systems. The contractor that is on site will be responsible for replacing any damaged sprinkler lines and/or heads. They will also be responsible for any yard damage. Once the new seed and mat and/or sod is installed, it will be the responsibility of the homeowner at each lot to water the new seed and mat and/or sod until it has re-established itself.

Before starting the work on site, each contractor must put in a call and have all the utilities in the area located. You might notice some areas in your yard that have been flagged and/or spray painted. This does not indicate the area in which they will be working. It is just to give them an idea of what kind of utilities are in the area that could possibly be hit while the contractor is on site working.

All work that is completed in public Right-of-Way and follow City of Omaha and Sarpy County specifications.

The work in your SID should not take longer than 30 days to complete. Please let me know if you have any questions or concerns on this at all.

Thank You,

A handwritten signature in black ink, appearing to read 'Nelson Flores', written over a white background.

**Nelson Flores**

Construction Admin Tech

**Engineering Answers**...by transforming concepts into reality

E & A Consulting Group, Inc.

10909 Mill Valley Road, Suite 100 • Omaha, NE 68154

402.895.4700 (o) • 402.506.5023 (m)

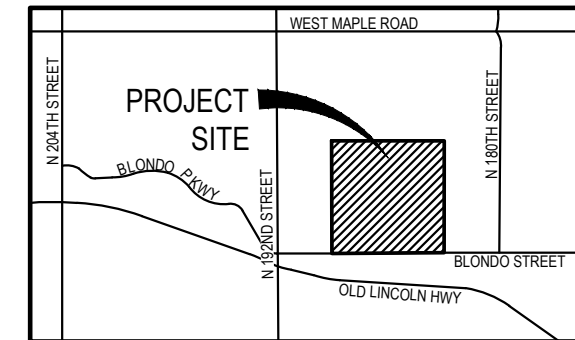
[nflores@eacg.com](mailto:nflores@eacg.com)



# BLONDO RIDGES

## 2024 STREET RECONSTRUCTION

SID NO. 570  
DOUGLAS COUNTY, NEBRASKA



VICINITY MAP

### APPROXIMATE BID QUANTITIES

ITEM	DESCRIPTION	QUANTITY	UNIT
1	CONCRETE PAVEMENT REPAIR, LARGE AREA	667	SY
2	CONCRETE PAVEMENT REPAIR, SMALL AREA	129	SY
3	FULL DEPTH SAW CUT EXISTING PAVEMENT	959	LF
4	ADJUST MANHOLE TO GRADE	4	EA
5	REMOVE AND REPLACE PCC SIDEWALK	525	SF
6	REMOVE AND REPLACE PCC CURB RAMP	39	SF
7	CONSTRUCT DETECTABLE WARNING PANEL (1 locations)	8	SF
8	REMOVE AND REPLACE FAULTY SUBGRADE	25	TN
9	ADJUST SPRINKLER (AS NEEDED)	3	EA

### NOTE TO BIDDERS

- All project procedures, materials, bonds and reserves shall conform to the City of Omaha's Standard Specifications for Public Works Construction, 2024 Edition ("Standard Specifications"). It is the responsibility of the CONTRACTOR to be familiar with the contents of the Standard Specifications. The Standard Specifications can be found at: <https://publicworks.cityofomaha.org/contractors-consultants2/contractors/standard-plates-curb-ramps-and-specifications>
- References to "Standard Plates" refers to the City of Omaha's 2024 Standard Plate list. These Standard Plates can be found at: <https://publicworks.cityofomaha.org/2024-standard-plate>

The CONTRACTOR is referred to the following Standard Plates for use on this project:

PLATE NO.	DESCRIPTION	REVISION DATE
503-01	Sidewalk Construction	02/13/2024
503-02	Sidewalk Location	02/13/2024
504-01-1	Concrete Curb Ramp	02/13/2024
1002-02-1, 3, 4	Pavement Repair	02/13/2024



### INDEX OF SHEETS

SHEET NO.	DESCRIPTION
1	COVER
2	WEST
3	EAST
4	TOTAL QUANTITIES
5	COMPOSITE MAP



### APPLICANT

SID # 570  
Wendy Burke, Chairman  
11440 West Center Road, Ste. C  
Omaha, NE 68144  
P: 402.334.0700  
F: 402.334.0815  
bbeller@fdjlw.com

### DESIGNER

E & A Consulting Group, Inc  
Teresa Wooten, P.E.  
10909 Mill Valley Road, Suite 100  
Omaha, NE 68154  
P: 402.895.4700  
F: 402.895.3599  
twooten@eacg.com

### INSPECTOR

E & A Consulting Group, Inc  
Randall L. Pierce, P.E.  
10909 Mill Valley Road, Suite 100  
Omaha, NE 68154  
P: 402.895.4700  
F: 402.895.3599  
rpierce@eacg.com

### CONTRACTOR

**E & A CONSULTING GROUP, INC.**  
Engineering • Planning • Environmental & Field Services  
10909 Mill Valley Road, Suite 100 • Omaha, NE 68154  
Phone: 402.895.4700 • Fax: 402.895.3599  
www.eacg.com  
State of NE Certificate of Authorization #CA0008

---

**BLONDO RIDGES  
2024 STREET  
RECONSTRUCTION**  
SID 570  
DOUGLAS COUNTY, NEBRASKA

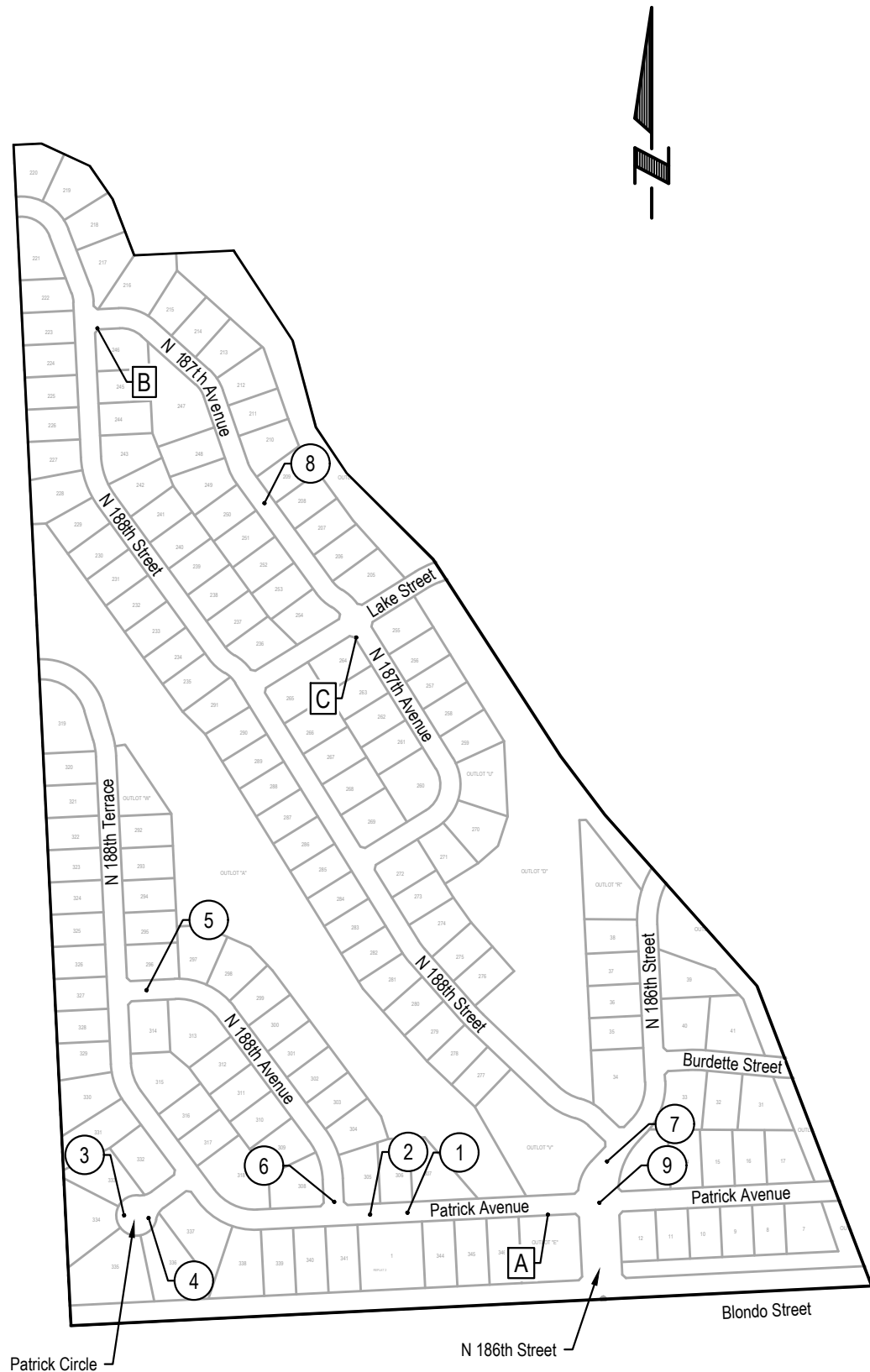
---

**COVER**

---

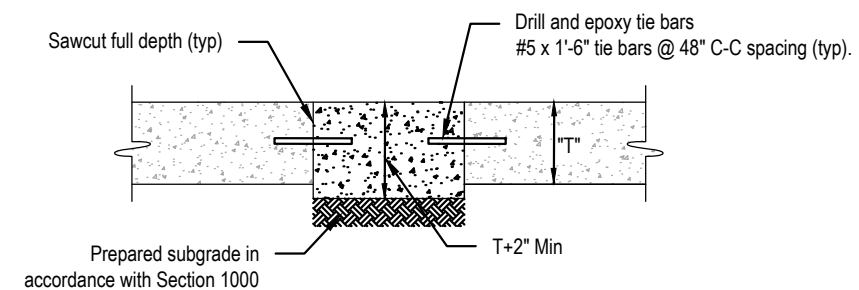
Revisions	Date	Description

Proj No: P2014.084.009  
Date: 09/19/2024  
Designed By: TMM  
Drawn By: JMB  
Scale: 1" = 500'  
Sheet: 1 of 5



2024 STREET RECONSTRUCTION									
AREA NO.	NO. POURS	SAW CUT L.F.	CURB L.F.	WIDTH	X	LENGTH	LARGE AREA EST S.Y.	SMALL AREA EST S.Y.	NOTES
1	2	65	75	25.0	x	30.0	83.3		
				12.5	x	15.0	20.8		
2	2	100	30	12.5	x	30.0	41.7		
				12.5	x	30.0	41.7		
3	2	115	25	25.0	x	45.0	125.0		
4	1	39	13	13.0	x	13.0		18.8	
5	1	40	15	12.5	x	15.0		20.8	
6	1	115	90	12.5	x	90.0	125.0		
7	1	110		6.5	x	50.0		36.1	
8	1	130	105	12.5	x	105.0	145.8		
9	1	40		10.0	x	10.0		11.1	

2024 STREET RECONSTRUCTION						
AREA NO.	TYPE	APPROX. DIMEN.		EST S.F.	NOTES	
A	Sidewalk	5.00	x 20.00	100.0	REMOVE & REPLACE	
B	Sidewalk	5.00	x 4.00	20.0	REMOVE & REPLACE, Adjust Manhole, Adjust Sprinkler (as needed)	
C	Sidewalk	5.00	x 8.00	40.0	REMOVE & REPLACE, Adjust Manhole, Adjust Sprinkler (as needed)	



E & A CONSULTING GROUP, INC. Engineering • Planning • Environmental & Field Services <small>10809 Mill Valley Road, Suite 100 • Omaha, NE 68154                  Phone: 402.665.4700 • Fax: 402.665.3599                  www.eag.com                  State of NE Certificate of Authorization #CA0008</small>	
BLONDO RIDGES 2024 STREET RECONSTRUCTION <small>SID 570                  DOUGLAS COUNTY, NEBRASKA</small>	
WEST	
Revisions Date Description	9/19/2024 5:03 PM K:\Projects\2014\084\p09\Engineering\CAD Files\Paving\Blondo Ridges 2024 Street Reconstruction-000.dwg Jessica Brown
Proj No: P2014.084.009 Date: 09/19/2024 Designed By: TAMV Drawn By: JMB Scale: 1" = 40' Sheet: 2 of 5	



**LEGEND**

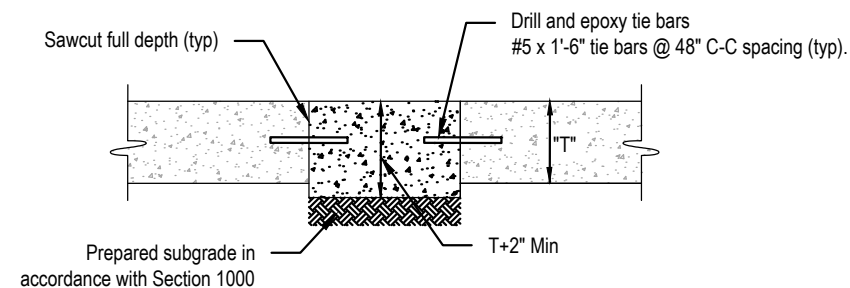
Trail

**2024 STREET RECONSTRUCTION**

AREA NO.	NO. POURS	SAW CUT L.F.	CURB L.F.	WIDTH	X	LENGTH	LARGE AREA EST S.Y.	SMALL AREA EST S.Y.	NOTES
10	1	55	30	12.5	x	30.0		41.7	
11	2	50	60	25.0	x	30.0	83.3		Adjust Manhole

**2024 STREET RECONSTRUCTION**

AREA NO.	TYPE	APPROX. DIMEN.	EST S.F.	NOTES
D	Curb Ramp	6.25 x 6.25	39.1	REMOVE & REPLACE, ADA Plate - Cast Iron
E	Sidewalk	5.00 x 5.00	25.0	REMOVE & REPLACE, Adjust Sprinkler (as needed)
F	Sidewalk	5.00 x 20.00	100.0	REMOVE & REPLACE
G	Sidewalk	5.00 x 8.00	40.0	REMOVE & REPLACE
H	Sidewalk	5.00 x 16.00	80.0	REMOVE & REPLACE
I	Sidewalk	5.00 x 8.00	40.0	REMOVE & REPLACE
J	Sidewalk	5.00 x 8.00	40.0	REMOVE & REPLACE
K	Sidewalk	5.00 x 8.00	40.0	REMOVE & REPLACE, Adjust Manhole



**SMALL AREA CONCRETE PAVEMENT REPAIR DETAIL**  
 NOT TO SCALE



Revisions	Date	Description
1	09/19/2024	ISSUE FOR PERMIT

Proj No: P2014.084.005  
 Date: 09/19/2024  
 Designed By: TAM  
 Drawn By: JMB  
 Scale: 1" = 40'  
 Sheet: 3 of 5



2024 STREET RECONSTRUCTION									
AREA NO.	NO. POURS	SAW CUT L.F.	CURB L.F.	WIDTH	X	LENGTH	LARGE AREA EST S.Y.	SMALL AREA EST S.Y.	NOTES
1	2	65	75	25.0	x	30.0	83.3		
				12.5	x	15.0	20.8		
2	2	100	30	12.5	x	30.0	41.7		
				12.5	x	30.0	41.7		
3	2	115	25	25.0	x	45.0	125.0		
4	1	39	13	13.0	x	13.0		18.8	
5	1	40	15	12.5	x	15.0		20.8	
6	1	115	90	12.5	x	90.0	125.0		
7	1	110		6.5	x	50.0		36.1	
8	1	130	105	12.5	x	105.0	145.8		
9	1	40		10.0	x	10.0		11.1	
10	1	55	30	12.5	x	30.0		41.7	
11	2	50	60	25.0	x	30.0	83.3		Adjust Manhole

2024 STREET RECONSTRUCTION					
AREA NO.	TYPE	APPROX. DIMEN.		EST S.F.	NOTES
A	Sidewalk	5.00	x 20.00	100.0	REMOVE & REPLACE
B	Sidewalk	5.00	x 4.00	20.0	REMOVE & REPLACE, Adjust Manhole, Adjust Sprinkler (as needed)
C	Sidewalk	5.00	x 8.00	40.0	REMOVE & REPLACE, Adjust Manhole, Adjust Sprinkler (as needed)
D	Curb Ramp	6.25	x 6.25	39.1	REMOVE & REPLACE, ADA Plate - Cast Iron
E	Sidewalk	5.00	x 5.00	25.0	REMOVE & REPLACE, Adjust Sprinkler (as needed)
F	Sidewalk	5.00	x 20.00	100.0	REMOVE & REPLACE
G	Sidewalk	5.00	x 8.00	40.0	REMOVE & REPLACE
H	Sidewalk	5.00	x 16.00	80.0	REMOVE & REPLACE
I	Sidewalk	5.00	x 8.00	40.0	REMOVE & REPLACE
J	Sidewalk	5.00	x 8.00	40.0	REMOVE & REPLACE
K	Sidewalk	5.00	x 8.00	40.0	REMOVE & REPLACE, Adjust Manhole



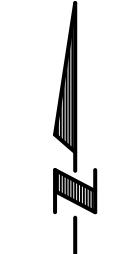
Revisions	Date	Description
1	09/19/2024	

**TOTAL QUANTITIES**

**BLONDO RIDGES  
2024 STREET  
RECONSTRUCTION**  
SID 570  
DOUGLAS COUNTY, NEBRASKA



**E & A CONSULTING GROUP, INC.**  
Engineering • Planning • Environmental & Field Services  
10809 Mill Valley Road, Suite 100 • Omaha, NE 68154  
Phone: 402.865.4700 • Fax: 402.865.3599  
www.eag.com  
State of NE Certificate of Authorization #CA008



LEGEND



Trail



Revisions	Date	Description
1	09/19/2024	TAM
2	JUNE	JMB

Prog No: P2014.084.008  
 Date: 09/19/2024  
 Designed By: TAM  
 Drawn By: JMB  
 Scale: 1" = 300'  
 Sheet: 5 of 5

**COMPOSITE MAP**

**BLONDO RIDGES  
 2024 STREET  
 RECONSTRUCTION**  
 SID 570  
 DOUGLAS COUNTY, NEBRASKA



**E & A CONSULTING GROUP, INC.**  
 Engineering • Planning • Environmental & Field Services  
 Engineering Answers

**E & A CONSULTING GROUP, INC.**  
 Engineering • Planning • Environmental & Field Services  
 10809 Mill Valley Road, Suite 100 • Omaha, NE 68154  
 Phone: 402.865.4700 • Fax: 402.865.3599  
 www.eaeg.com  
 State of NE Certificate of Authorization #CA0008